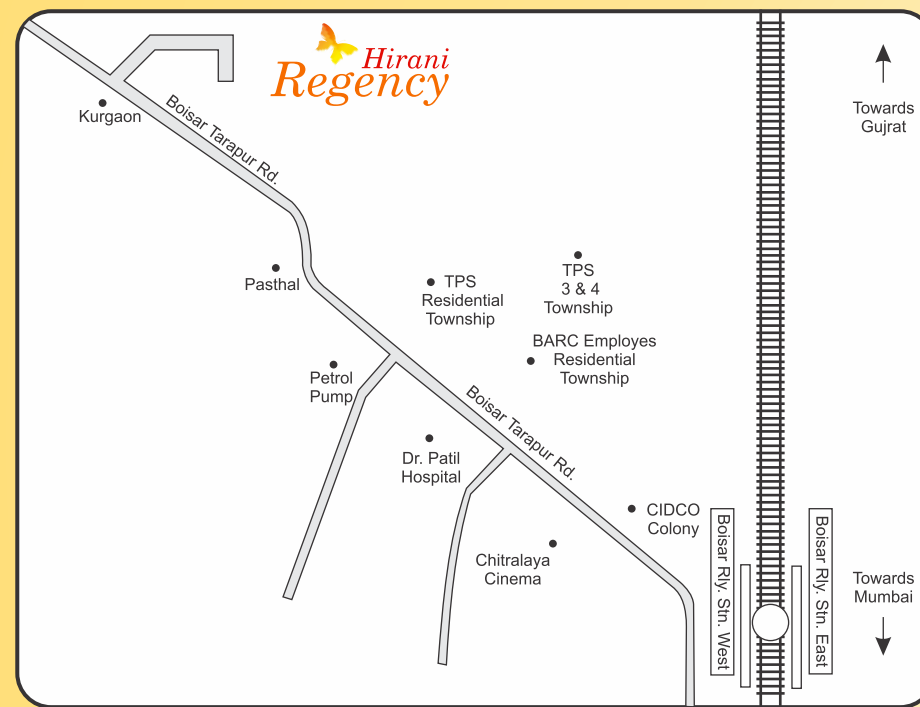




LOCATION MAP



- 5.5 km from Boisar station
- 0.2 km from Viraj International School
- 2 km from Roop Rajat Mall
- 3.5 km from hospital
- 2.5 km from petrol pump
- 7 km from tarapur beach

Project by **Hirani** Developer **Hirani Lifespaces**

Follow us on   

Disclaimer: All Plans, Drawing, amenities, facilities etc are subject to approvals of the respective authorities & are liable to change. If necessary, the direction to change remains with the developers. All floor plan, photograph & maps are artistic conception & not actual depictions of the building, wall, interior, driveway amenities or landscaping.

For Sales Enquiry
91-9967356865 | +91-9930852147



Site Address
Hirani Regency, Building No 3,
Survey No 28/3 & 30/4,
Opp. Zilla Parishad School, Village Kurgaon,
Boisar West, Thane, Maharashtra, India.

Branch Office (Boisar)
Hirani Lifespaces, 102, Janardan Apartment,
Next to Brijwasi, Boisar Palghar Road, Boisar (West),
Thane, Maharashtra, India.
Email : lifespaces@thehiranigroup.com

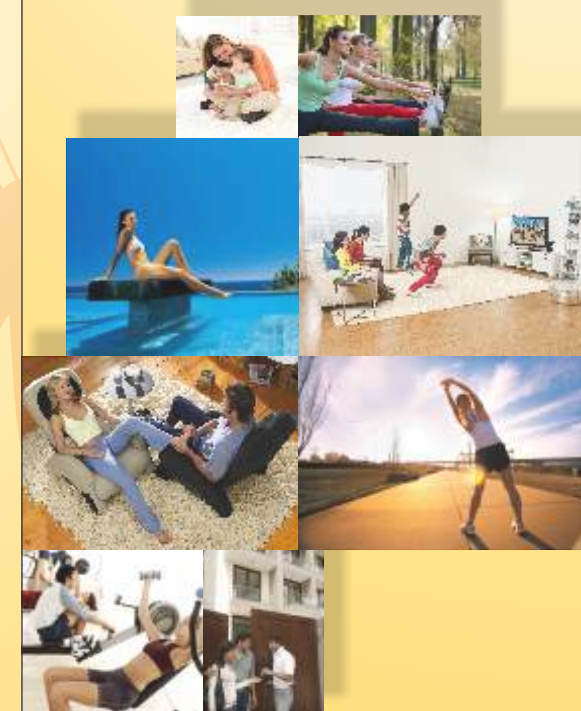
Head Office
B/207, Hinal Heritage, S.V.P. Road,
Borivali (West), Mumbai - 400 092, Maharashtra, India.
Tel : +91-2228918249 / +91-2228919673

Email
For general enquiry - mail@hiranigroup.org
For sales enquiry - sales@hiranigroup.org

Architect & R.C.C. Consultant
Vastushilp Associates

Legal Advisor
Adv. Dharmendra Bhatt

Hirani Regency



LIVE A COLOURFUL LIFE...

Salsiddhi Creations : 9920133743

Hirani Regency

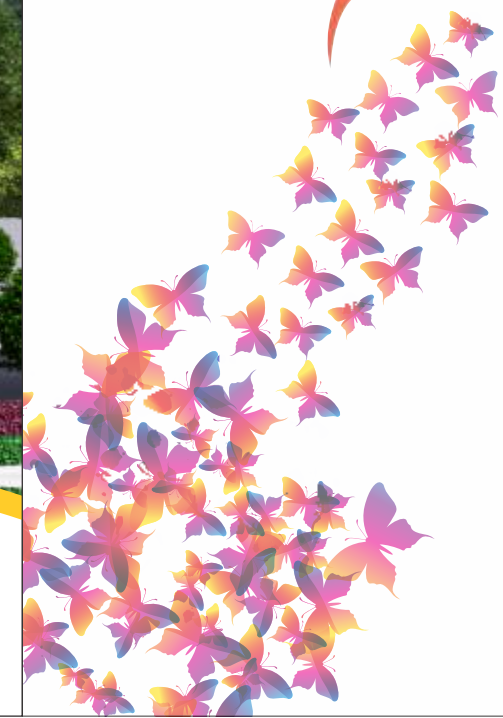
Hirani Lifespaces is coming up with affordable housing project in Boisar. It has grown by leaps and bounds in recent times. It is situated about 80 km from Mumbai. There are Local, Shuttle & Memu trains running from Churchgate to Boisar. Most long distance trains also stop at Boisar. There are regular state transport buses from Palghar, Thane, Bhiwandi and Wada to get to Boisar as well.

Boisar town has more than 1,500 industrial units, with renowned companies like Tata Steel, JSW Steel, BARC, Tarapur Power Station etc. providing employment opportunities for people in Boisar and adjoining areas. In addition, there is also MIDC industrial area, with a population of around 1.25 lakh and around 10 lakh people in the neighboring villages of Boisar. Hirani Lifespaces is getting full spectrum of lifestyle in affordable prices with your dream home within budget.

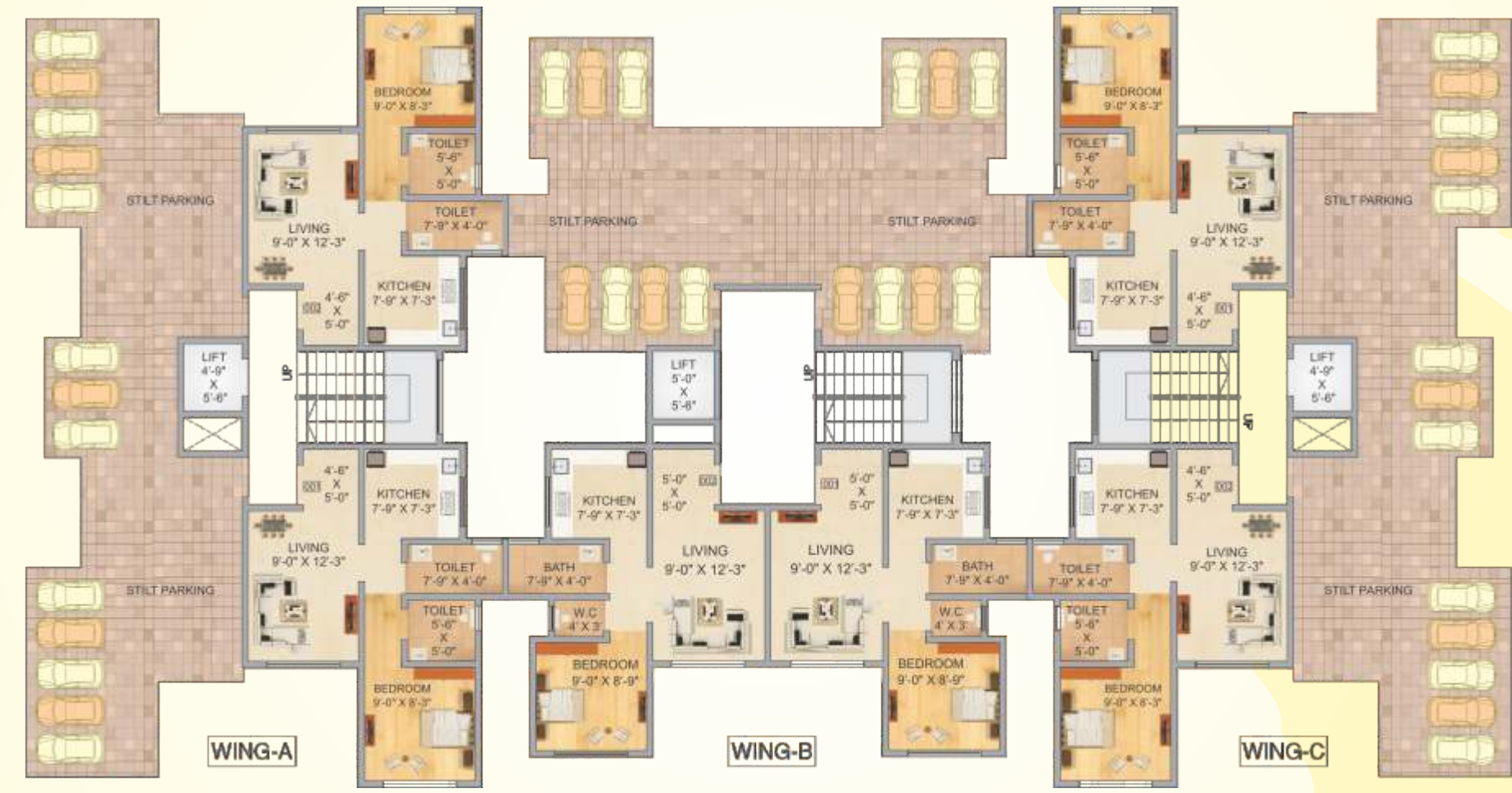


Live a colourful life... 

 *Hirani
Regency*



GROUND FLOOR PLAN



BUILDING NO. 3



1ST TO 4TH FLOOR PLAN



BUILDING NO. 3





Type 1 - 1 Bhk



Type 2 - 1 Bhk



Type 3 - 1 Bhk



Type 1 - 2 Bhk



3D FLOOR PLANS





Amenities

- ✦ Designer vitrified tiles & skirting in all rooms
- ✦ Decorative flush door in all room
- ✦ FRP door in toilets
- ✦ Aluminum sliding windows
- ✦ All windows and toilet door framed with marble
- ✦ Granite kitchen platform with s.s sink & water purifier point
- ✦ Intercom facility in each flat
- ✦ Inverter wiring & provision
- ✦ MCB/ECB short circuit protection
- ✦ Concealed wiring with ISI approved wires & modular switches
- ✦ Tv, A.C. and telephone point in living room
- ✦ Designer glazed tiles up to door height in toilets
- ✦ Concealed plumbing and good quality sanitary ware with C.P fixture in all toilets
- ✦ Geyser point with hot and cold water mixture in bath
- ✦ Provision for water tank on loft
- ✦ All internal walls with acrylic paint
- ✦ All internal walls with pop finish molding in living room

Features

- ✦ High speed elevator
- ✦ Ample car parking
- ✦ Well designed society office
- ✦ RCC structure specially designed for earthquake & heavy wind pressure
- ✦ Attractive entrance gate and security cabin
- ✦ Rainwater harvesting to save water
- ✦ Decorative entrance lobby
- ✦ Good quality exterior weatherproof paint

Hirani Regency

Hirani Regency

OUR OTHER PRESTIGIOUS PROJECTS



Meghdoot Chs., Kurla (E)
40,000 sq.ft.



Skyview, Kurla (E)
1,25,000 sq.ft.



De-elmas, Goregaon (E)
1 lacs sq.ft.



Granth, Bandra (E)
18,000 sq.ft.



Samruddhi Chs, Kurla (E)
60,000 sq.ft.



Bhakti Apartment, Borivali (E)
15,000 sq.ft.



Haze Apt., Kurla (E)
45,000 sq.ft.



Vishal Enclave, Dahisar (E)
15,000 sq.ft.