



Project By



Developers : Hirani Realtors

Site Address : Sai Krupa CHS., Road No. 4, Daulat Nagar,
Borivali (E), Mumbai - 400066

Head Office : B/207, Hinal Heritage, S.V.P. Road, Borivali (W), Mumbai 400 092
Tel. : + 91-28918249, Fax : +91-28919673

Sales Enquiry

☎ : 7756049777 / 9930852147

✉ : sales@thehiranigroup.com | 🌐 : www.thehiranigroup.com

Follow us on :



Architect : M/s. S. Arc.

Design Architect : M/s. Ghotge & Desai

R.C.C Consultant : Mr. Harish Patel

Legal Advisor : M/s. Chitnis Vaithy & Co

Affiliated



BUILDERS ASSOCIATION OF INDIA



BUILDING CONSTRUCTION & ENGINEERS





add a sparkle to your existence...

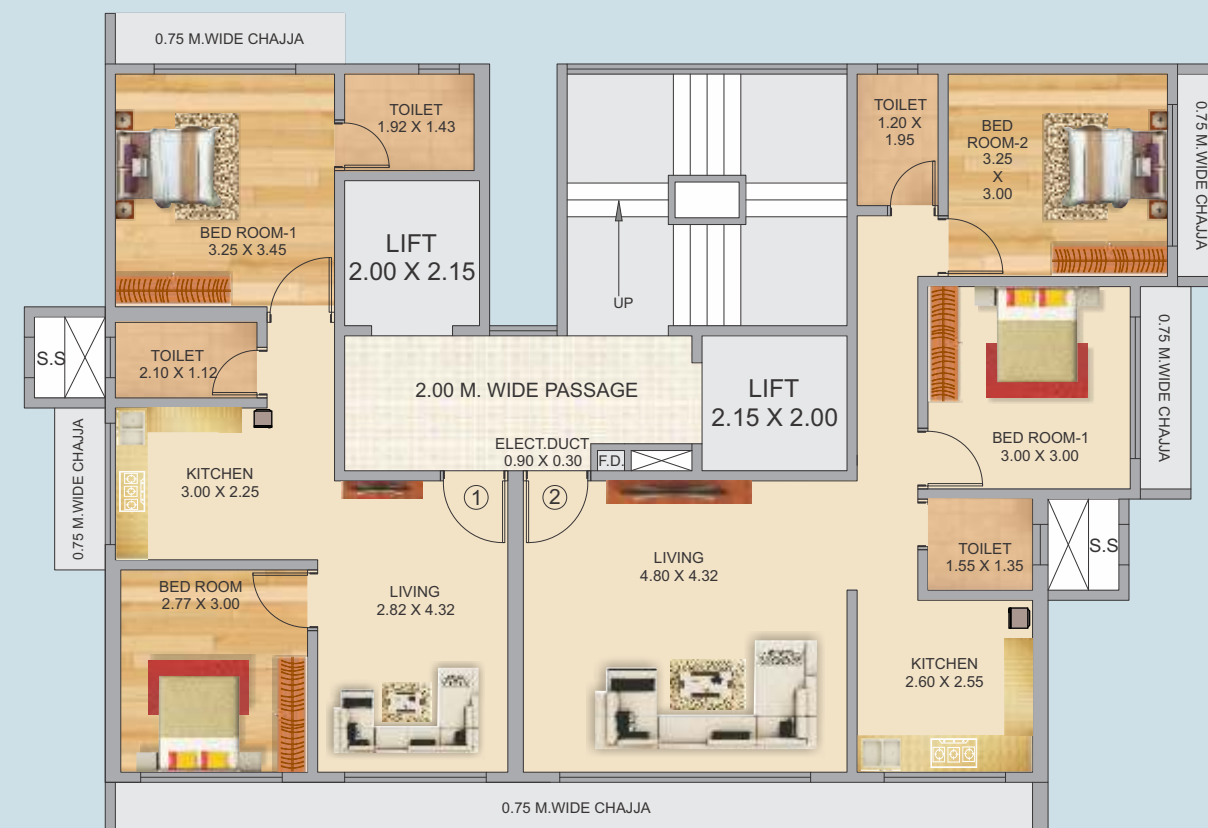
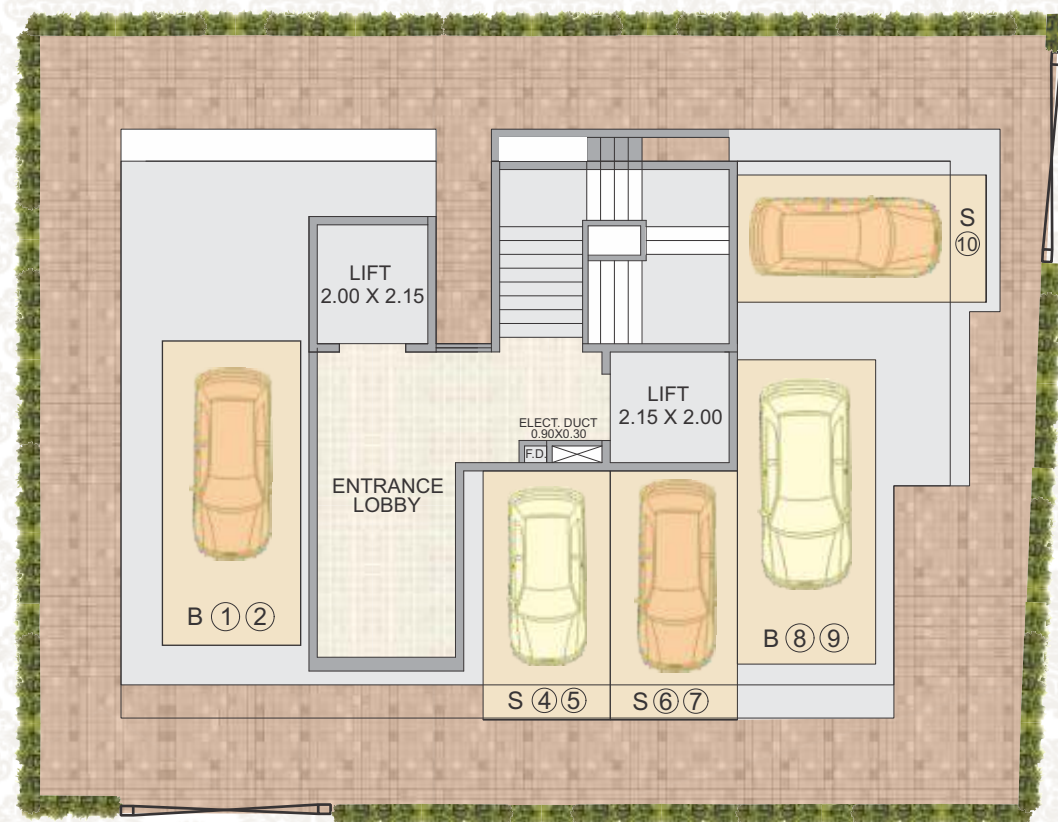
Located in the bustling environ of Borivali (East), "Sai Krupa" is an iconic Stilt + 10 storey tower offering many other luxurious amenities that make it a heaven of comfort & bliss for its residence. A collection of 2 Bhk that are exquisitely planned taking into account the requirement of budget homes that everyone desires.

Watch it bring glitter to Borivali. Brought to you by Hirani Group & Saptarshi Group, the residential tower is yet another precision marvel that raises the bar of luxury higher than ever before. Great layout, every inch of space well utilized and "Vastu Shastra" friendly.

Apart from luxuries, residents are connected to suburban spots for quality entertainment, shopping, education, medical facilities, temples, all type of transport services etc. Exquisitely designed lobby will be every visitors introduction to who really lives in the building.

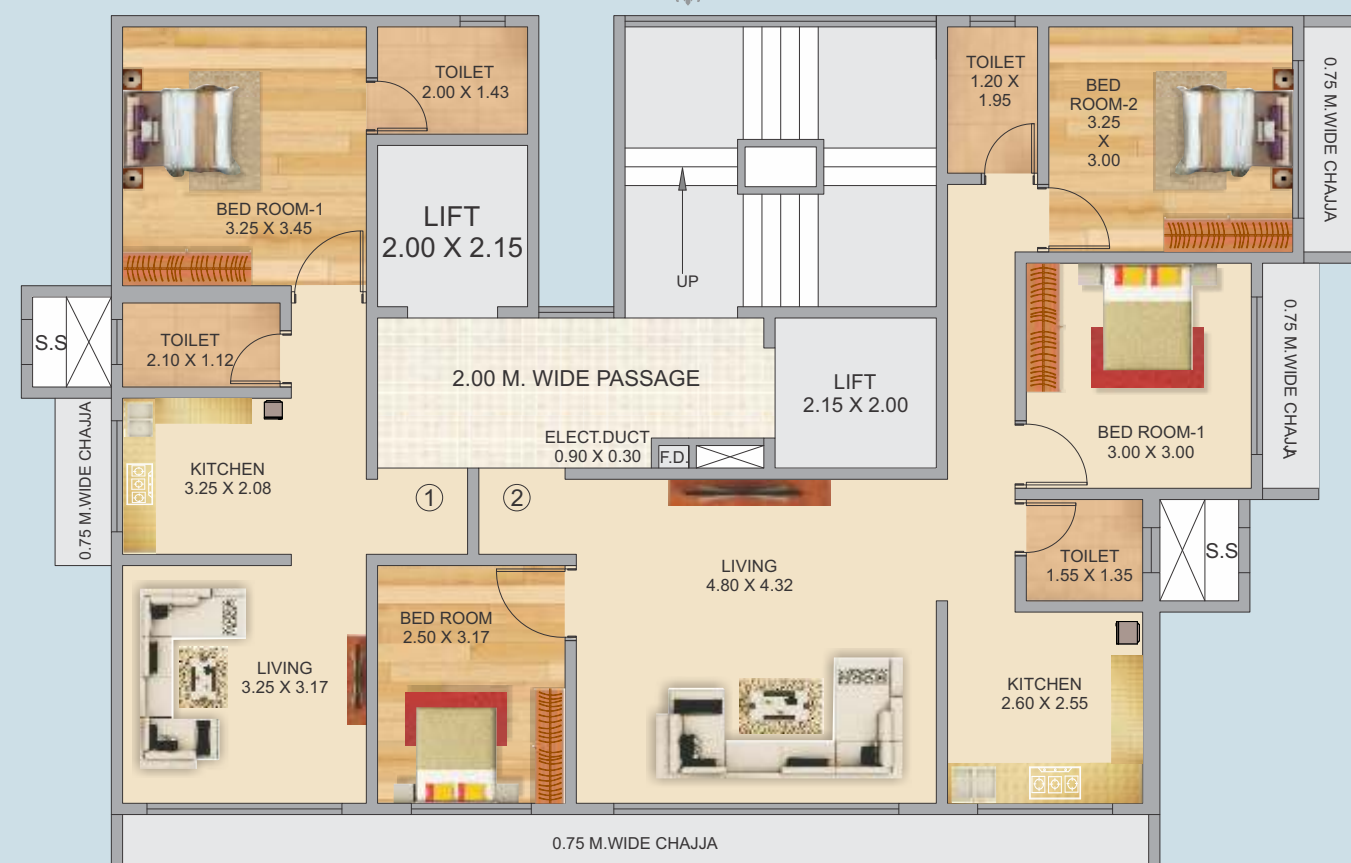


STILT FLOOR PLAN

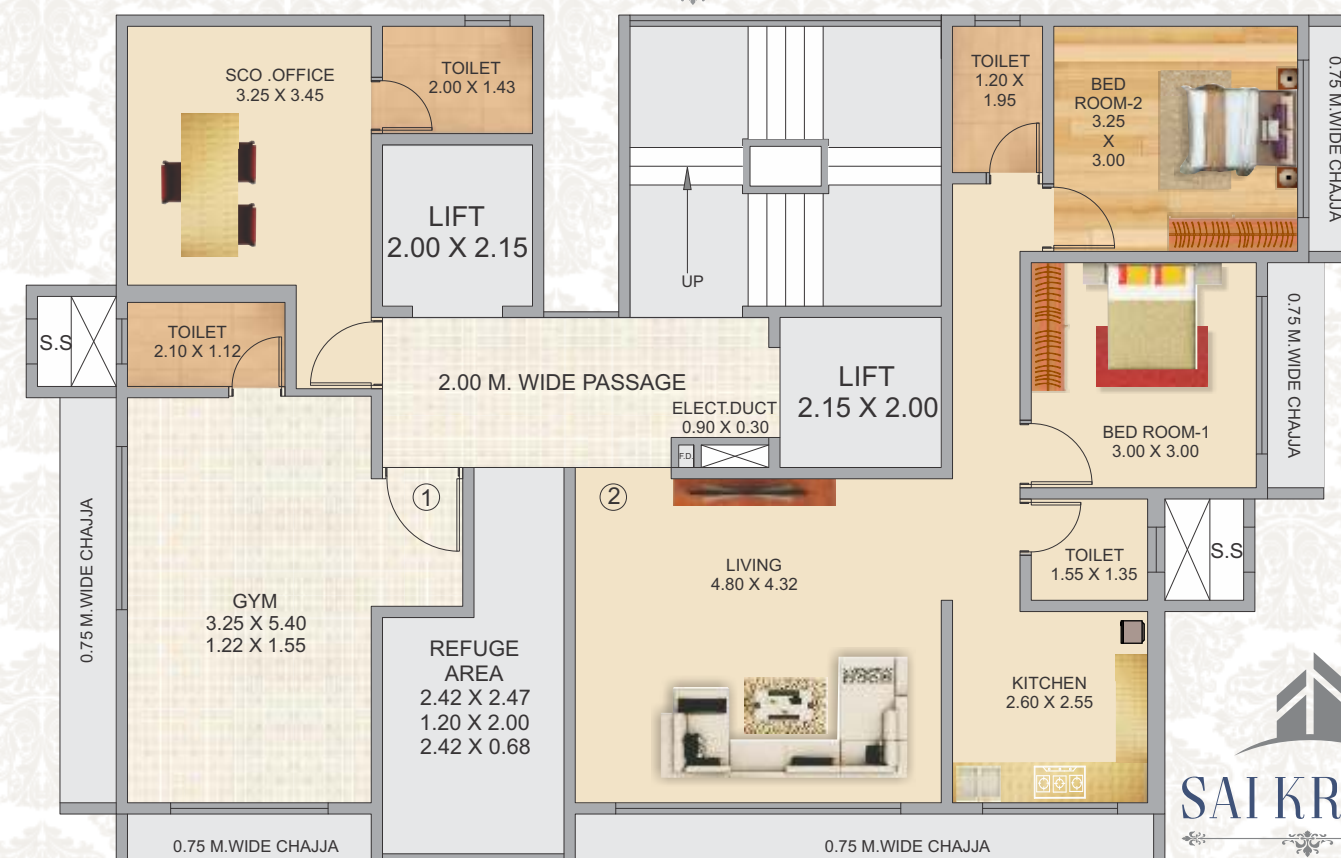


2ND. 7TH & 9TH FLOOR PLAN

1ST FLOOR PLAN



8TH FLOOR PLAN



AMENITIES

FLAT FEATURES

- Entrance door finished with laminate
- Entrance door with safety lock, night latch
- Internal flush door with laminate finish
- Vitrified flooring adorning the apartment
- Anodized aluminum sliding windows screened with M.S. grill
- Cable T.V., A.C. & telephone points in living room & bedrooms
- Oil bound distemper / plastic paint on interior walls
- Reputed make plumbing, fittings, sanitary items

SAFETY & SECURITY

- 24 X 7 surveillance camera in complex
- Intercom facility
- Advanced fire fighting system

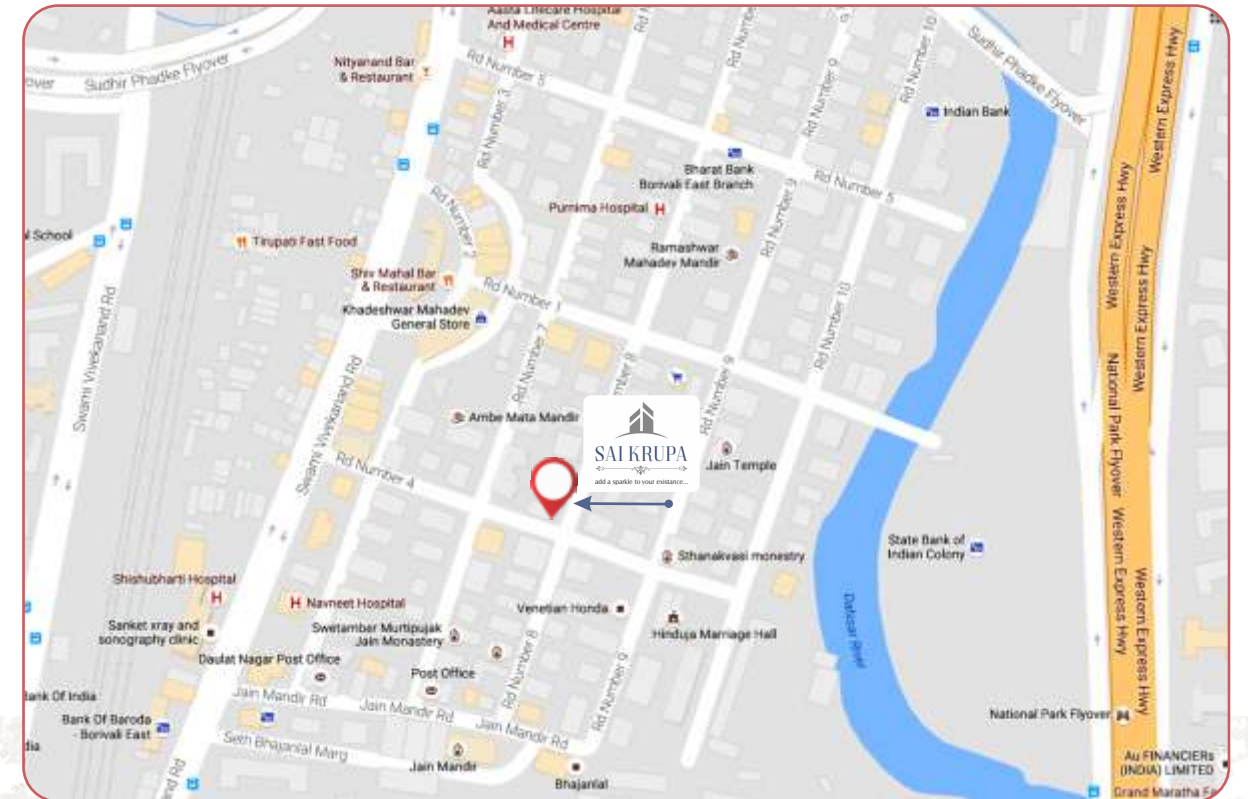
KITCHEN FEATURES

- Granite platform with scratch resistant stainless steel sink & drain board
- Tiled dado above platform
- Exhaust fan provision
- Provision for water purifier

GENERAL AMENITIES

- Entrance lobby with superior finishes
- High speed elevators
- Anti-termite foundation
- Rain water harvesting
- Stack car parking

LOCATION MAP



LOCATION ADVANTAGES



300 mtr W.E.H
500 mtr. Bus Depot



5 min walking distance
Borivali railway station



Schools
& Hospital
at walkable distance



2 min waking
distance to Jain Mandir